

Architectural landscape of Jaipur

Set within the evolving architectural landscape of Jaipur, this residence is envisioned as a contemporary haveli an elegant synthesis of tradition and modernity. Across its facade, terrace, and landscape, the design unfolds as a layered narrative that reinterprets Jaipur's rich architectural vocabulary into a refined, livable form suited for present-day lifestyles.

The primary facade establishes the architectural language of the house. A bold cantilevered volume, wrapped in a finely detailed perforated screen, becomes the focal point of the elevation. This JAISALMER STONE JALI inspired by the intricate latticework of Hawa Mahal is not merely ornamental but deeply performative. It filters harsh sunlight, reduces heat gain, and creates a delicate play of light and shadow within interior spaces. As the sun moves across the day, the facade transforms, offering a dynamic visual experience that connects the building to time and climate. The reinterpretation of the traditional jharokha finished in STONELAM tile in this projected volume creates a sense of openness while maintaining privacy, a key principle in historic Rajasthani homes.

Materiality further reinforces this connection to context. The use of warm, textured stone on the facade draws from the timeless palette of Jaipur's historic architecture, reminiscent of the surfaces seen in Amber Fort. This grounding element is juxtaposed with sleek glass railings, clean plastered planes, and precise linear lighting, introducing a contemporary clarity. The result is a

balanced composition where heaviness meets lightness, and tradition meets minimalism.

Moving from the facade to the terrace, the narrative shifts from visual identity to experiential living. The terrace is conceived as an elevated aangan a reinterpretation of the traditional courtyard that forms the heart of Rajasthani homes. Here, the space is designed for leisure, interaction, and climatic comfort. A partially covered roof with a skylight allows diffused natural light to enter, while protecting the space from direct heat. The integration of built-in seating, soft furnishings, and a bar counter creates a seamless environment for social gatherings.

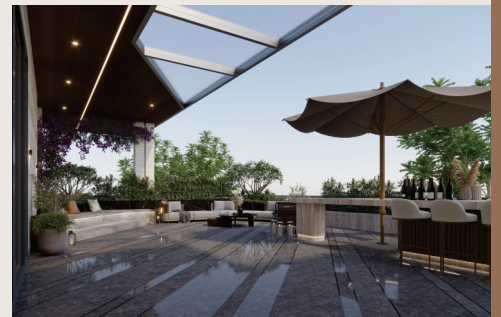
The material palette of the terrace complements the overall design language. Textured flooring ensures durability and slip resistance, while wood-finished ceilings add warmth and intimacy to the semi-open space. Linear lighting integrated into the ceiling and edges enhances the geometry after sunset, creating a soft, ambient glow that transforms the terrace into a serene retreat. The presence of planters and greenery along the edges softens the built form, reinforcing the connection between indoor and outdoor spaces.

The third image, viewed from the water body, highlights the landscape as an integral extension of the architecture. The foreground is defined by a linear water feature that runs parallel to the built edge, acting as both a visual anchor and a climatic device. Water, a crucial element in traditional Indian architecture, is used here to create a



**Geeta Arya - Principal Architect,
Geeta Vaibhav Architects**

**Vaibhav Arya - C.E.O & Co- Founder,
Geeta Vaibhav Architects**



cooling microclimate while adding a sense of tranquility to the outdoor environment.

The projecting glass volume above the water body further emphasizes the concept of the modern jharokha. Framed in a warm metallic tone, it appears as a floating box light, transparent, and elegant. This element creates a visual connection between the interior and the landscape, allowing occupants to engage with the outdoors while remaining sheltered. The reflection of this volume in the water enhances the sense of depth and spatial layering.

Geeta Vaibhav Architects
Web : architectsgva.com

